

Peel and Stick

MRYINTERIORS

Installation Guide

Non-Recommended Surface

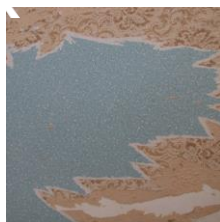
For best results, apply self-adhesive wallpaper to smooth, flat walls that allow for easy adhesion and strong binding. Avoid installing on the following surfaces, as the wallpaper may not stick properly or could cause damage when peeling off:

- Textured Walls — Applying self-adhesive wallpaper to uneven or textured surfaces will result in visible bumps and imperfections. Additionally, concave areas will trap air, preventing proper adhesion.
- Wallpaper — Avoid applying self-adhesive wallpaper over existing wallpaper. Attempting to reposition it will likely result in tearing off the underlying paper layer entirely.
- Brick/Cinderblock — Do not apply to rough surfaces, as the wallpaper will not adhere properly. Wooden walls — similarly as on brick, the wallpaper can peel off after some time
- Unpainted Drywall/Sheetrock or Plaster — paper may tear off when peeling off
- Non-stick Paint e.g. Latex paint — Certain latex paints can interfere with adhesion, potentially causing the wallpaper to peel. Always test a small, inconspicuous area with the provided sample to ensure compatibility before full application.
- Wall behind old plaster/paint - when peeling off, it is possible that the paint will strip off with part of the plaster
- Wall covered with mold - Do not apply to walls with mold. The underlying moisture will prevent proper adhesion, leading to peeling.

Bathroom: Due to bathroom steam, installing any wallpaper can be challenging. To test suitability for self-adhesive wallpaper, order a sample and apply it to the desired wall at a height above 6 feet. If it remains adhered after 7-14 days, the wallpaper should also stick. Avoid installation in areas with direct water contact. Non-self-adhesive wallpapers will stick to the wall.



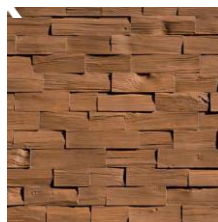
Texture Wall



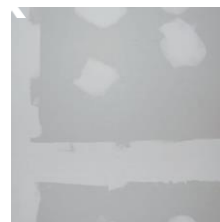
Wallpaper



Brick /
Cinderblock



Wooden Walls



Unpainted Drywall /
Sheetrock or Plaster



Non in the Shower

Before You Start: You'll need a sharp utility knife with extra blades and a wallpaper smoother, squeegee, or grout float. And, someone to help:)

You can also find some useful video links at the end. There are numbers at the bottom of each panel and starting from left to right, C1 or R1 goes first, and then C2 or R2, C3 or R3, and so on.

Prepare your paper: Re-roll your wallpaper so that the top is on the outside of the roll. Don't trim any part of the paper before hanging.

Preparing The Wall

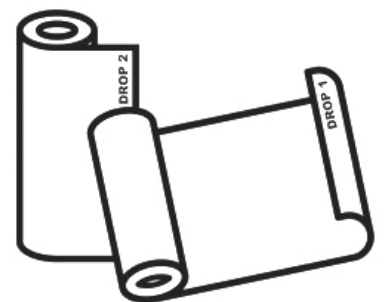
- Prepare the wall before installing your self-adhesive wallpaper in the same way you would before applying traditional wallpaper or painting.
- Address any unevenness by applying a leveling coat and allowing it to dry completely smooth. Similar to preparing old plaster or paint, the surface should be cleaned and smoothed beforehand.
- If freshly painted, make sure to allow at LEAST 30 days for the paint to CURE
- Clean the wall thoroughly with a cloth dampened with warm water to remove all dust, grease, and any residue that could weaken adhesion. Avoid using chemicals or soap. The wall must be completely dry before you begin installation.



Before applying wallpaper around power outlets, ensure the power supply is turned off and unscrew the socket covers.

Before you hang your wallpaper

- Upon receiving your wallpaper, immediately inspect the package to confirm your order is complete and free from any defects, such as:
 - Errors in print
 - Incorrect wallpaper size – ensure it is not smaller than your order.
 - Note that the wallpaper should be slightly larger than ordered as a safety margin.
 - Confirm that all panels are present (each panel is sequentially numbered).
 - If you find any defects, do not install the wallpaper. Immediately contact customer service to file a complaint. In order to be eligible for a replacement
 - Make sure the wall is properly prepared before you begin hanging the wallpaper.



Start at the left edge of your wall:

When hanging multiple wallpaper panels, work from LEFT to RIGHT to maintain a seamless design flow across the wall. Begin in the upper left corner. If covering the entire room, start in an inconspicuous corner, as the pattern repeat may not perfectly align at the final seam.

Apply the First Panel: Pick up the first panel and peel away a few inches of the paper backing from the top of the roll

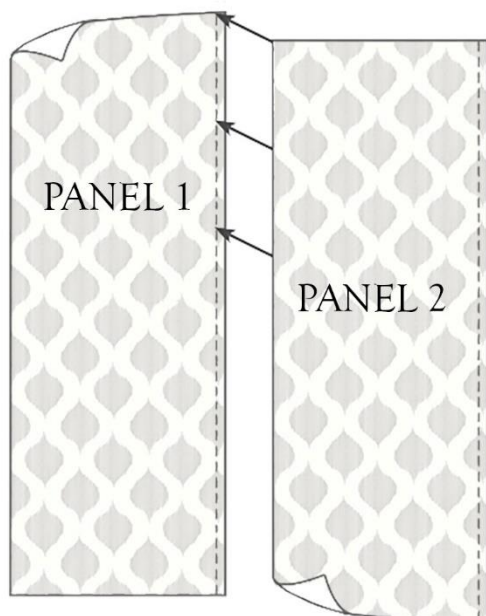
Fold this backing away from the adhesive and crease it firmly. This will expose a few inches of the sticky side to start your application. Keep the rest of the roll supported and unpeel the backing slowly as you work your way down the wall. Avoid unrolling the entire roll at once.

Position the top edge of the wallpaper panel against the ceiling line, ensuring it's level and aligned correctly on the wall. Have your assistant step back to visually confirm that the panel is hanging straight. Once aligned, press the exposed sticky section onto the wall. If it is not aligned correctly then gently take it off and reapply (Do not pull rapidly!) Gently smooth out the wallpaper using a plastic smoother to avoid the formation of air bubbles.

- **Note:** The material is flexible, so try not to stretch it, as it may cause deformation, gaps etc. Once you receive the product, you may notice some creases on the edges, which will disappear once you do the double cutting.

After the top of the panel is positioned, slowly peel the backing paper down in sections of about 5 to 10 inches. As you peel, smooth the wallpaper onto the wall, working from the center outwards. If you encounter large air bubbles, use a squeegee to carefully push them towards the edges of the design, making sure not to scratch the wallpaper surface.

Next Panel: For the next panel, take the second piece of wallpaper and position its left edge to overlap the right edge of the previously applied panel about 1" (2 cm), carefully aligning the pattern repeat visually. Repeat these steps for the continues panels.



Finishing: Once all panels are applied, use a sharp utility knife to trim any excess wallpaper along the edges of the wall and any remaining overlap on the rightmost edge of your installed area. You can perform a double cut for a cleaner seam, if desired. If you perform the double cut, then all seams will disappear.

Cleaning the Wallpaper:

- Wipe your wallpaper clean with a damp cloth as soon as it gets dirty. Avoid using chemicals, as they can damage the print.

Peeling off:

- The wallpaper can be peeled off, but remember to peel off slowly and gently. You can use a hairdryer, which will soften the glue. Be careful not to peel off the paint layer. If this occurs, it indicates that the wall was not properly prepared before wallpaper application.

Here are videos that show how to install peel-and-stick wallpaper. You can also find many videos on YouTube, just write "How to hang overlapped wallpaper".

<https://www.youtube.com/watch?v=IUihMPlcgjA>

<https://www.youtube.com/watch?v=jdzpsQCLYME>

www.youtube.com/watch?v=QgjnYs5Wn9c

<https://www.youtube.com/watch?v=EQZuyZKEmWY>